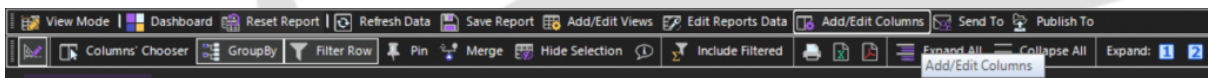
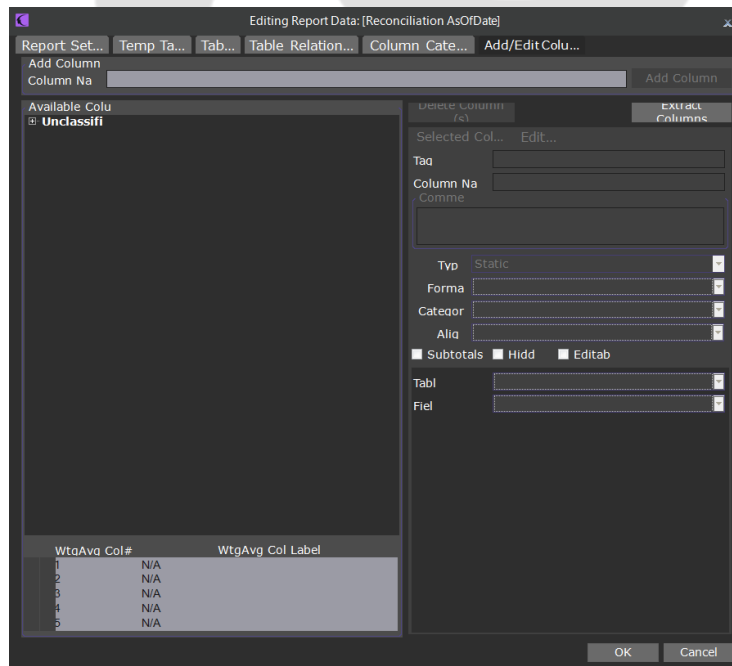


When editing/adding a column formula, I get a dialog that says the formula is incorrect

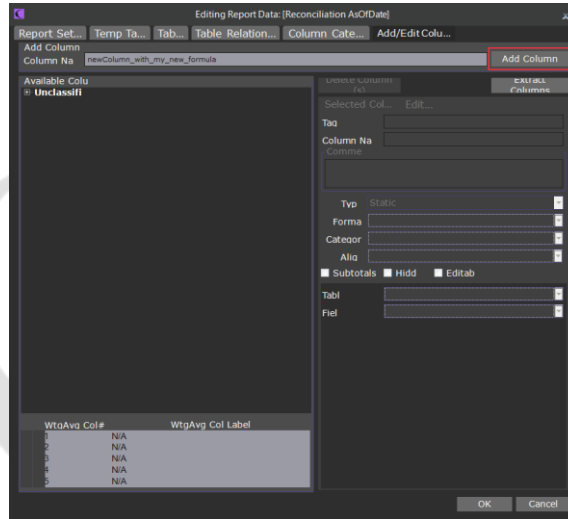
1. Click on add/edit columns.



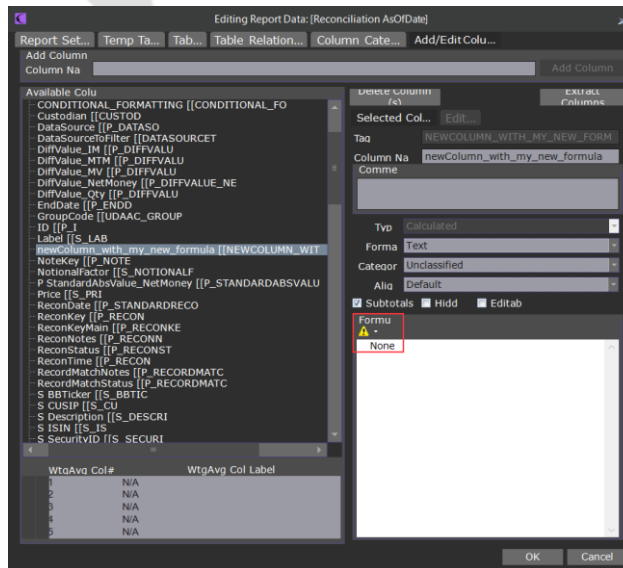
2. Editing Report Data appears.



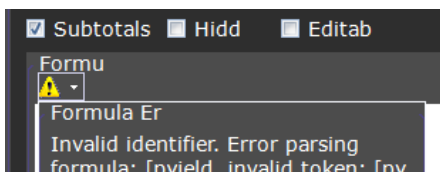
3. Name and add the column with the new formula. Check the functions available in Spark [here](#).



4. Warning signal comes up, because we have not introduced a formula.



5. Clicking on the warning signal will tell us what error(s) we have and also if we entered a reference wrong.





CONTACT US

Email: support@athenasystems.com

Website: www.athenasystems.com

AMERICAS:

1411 Broadway, 16th Floor
New York, New York 10018, USA

UK, EUROPE & MIDDLE EAST:

Carrera de San Jerónimo, 17
28014 Madrid, SPAIN

APAC:

11 Doan Van Bo, 23rd Floor
Ward 12, District 4, 700000, Ho Chi Minh City, VIETNAM



[Visit the Spark Help Portal](#)