

Include or not include filtered rows in the aggregated values calculation

All grids now allow you to choose including the filtered rows in the aggregated values calculations or not. This setting is per grid and it is set to false by default.

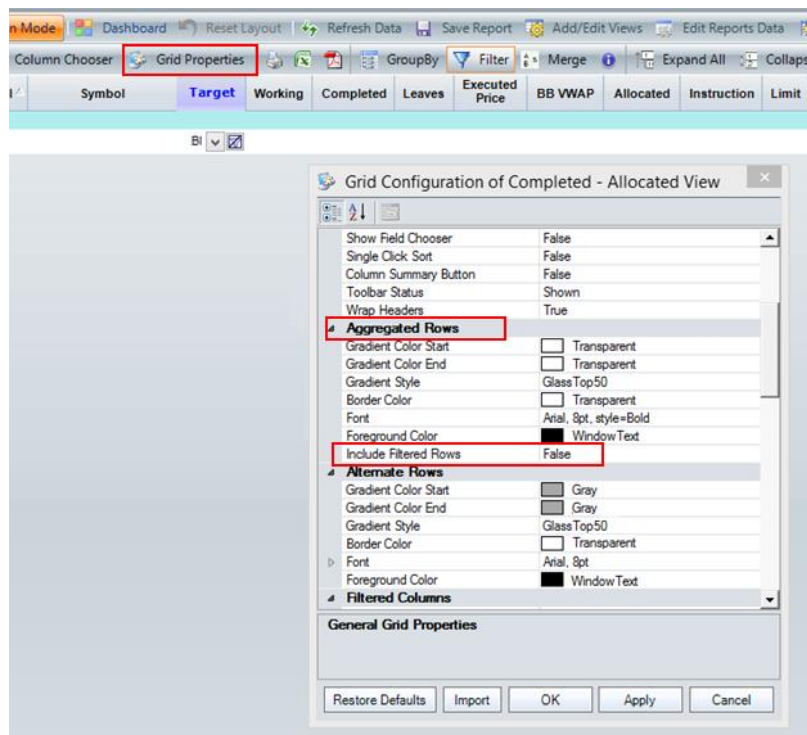
1. Grid Properties.

2. Aggregated Rows.

3. Include Filtered Rows: It is set to FALSE by default.

- If we want to include the filtered rows in the aggregated values calculations, that is, the aggregated values will change depending on the filtered rows → Set to **FALSE**
- If we do not want to include the filtered rows in the aggregated values calculations, that is, the aggregated values will not change with filtered rows → Set to **TRUE**.

4. Apply & OK.





CONTACT US

Email: support@athenasystems.com

Website: www.athenasystems.com

AMERICAS:

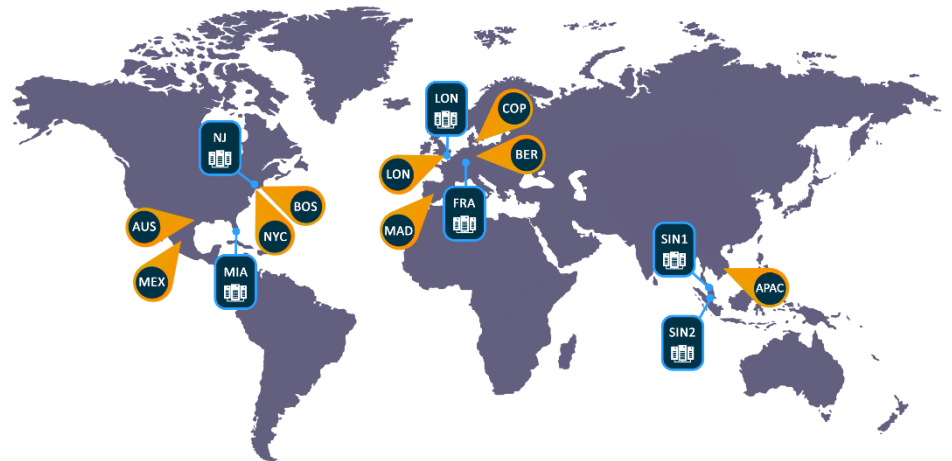
1411 Broadway, 16th Floor
New York, New York 10018, USA

UK, EUROPE & MIDDLE EAST:

Carrera de San Jerónimo, 17
28014 Madrid, SPAIN

APAC:

11 Doan Van Bo, 23rd Floor
Ward 12, District 4, 700000, Ho Chi Minh City, VIETNAM



[Visit the Spark Help Portal](#)