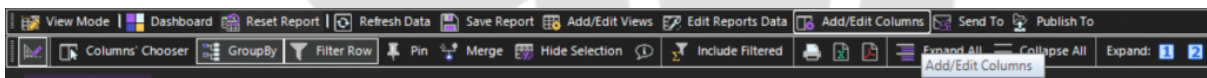


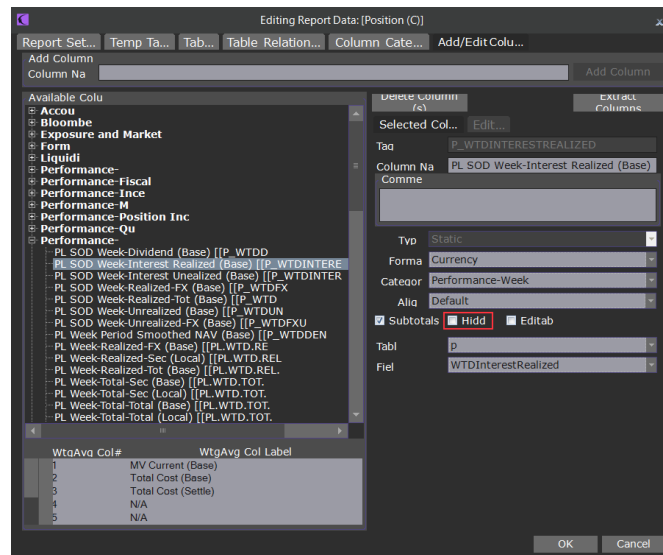
## I cannot see a column in columns chooser

If you do not find the column in Column Chooser you are searching for, try checking this article first: [Quick Columns' Chooser tool on Design Mode](#)

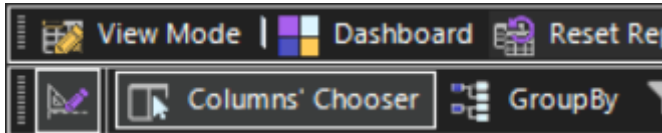
1. Assure this column exists by clicking on Add/edit columns.



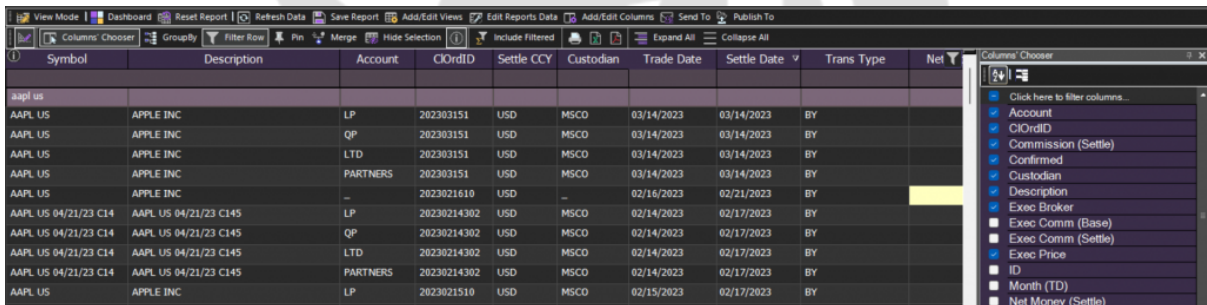
2. Try to find the column you are looking for, for example by name.
3. Click on the name of the column once you find it.
4. Make sure the Hidden box is not checked. Uncheck if it is checked.



5. Click on Column Chooser.

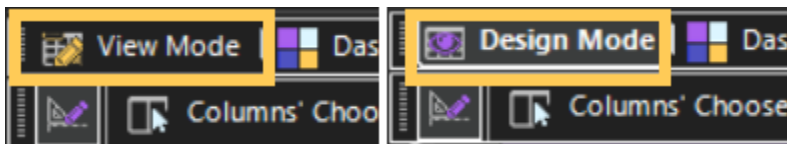


6. Select the column you want to add from the list on your screen's right side.
7. The selected column/columns will appear next to the other columns on the column header



If you cannot find the column you are looking for in the Columns' Chooser list:

8. On the tool bar, click on View Mode and you will switch to Design Mode.





## CONTACT US

Email: [support@athenasystems.com](mailto:support@athenasystems.com)

Website: [www.athenasystems.com](http://www.athenasystems.com)

### AMERICAS:

1411 Broadway, 16th Floor  
New York, New York 10018, USA

### UK, EUROPE & MIDDLE EAST:

Carrera de San Jerónimo, 17  
28014 Madrid, SPAIN

### APAC:

11 Doan Van Bo, 23<sup>rd</sup> Floor  
Ward 12, District 4, 700000, Ho Chi Minh City, VIETNAM



[Visit the Spark Help Portal](#)