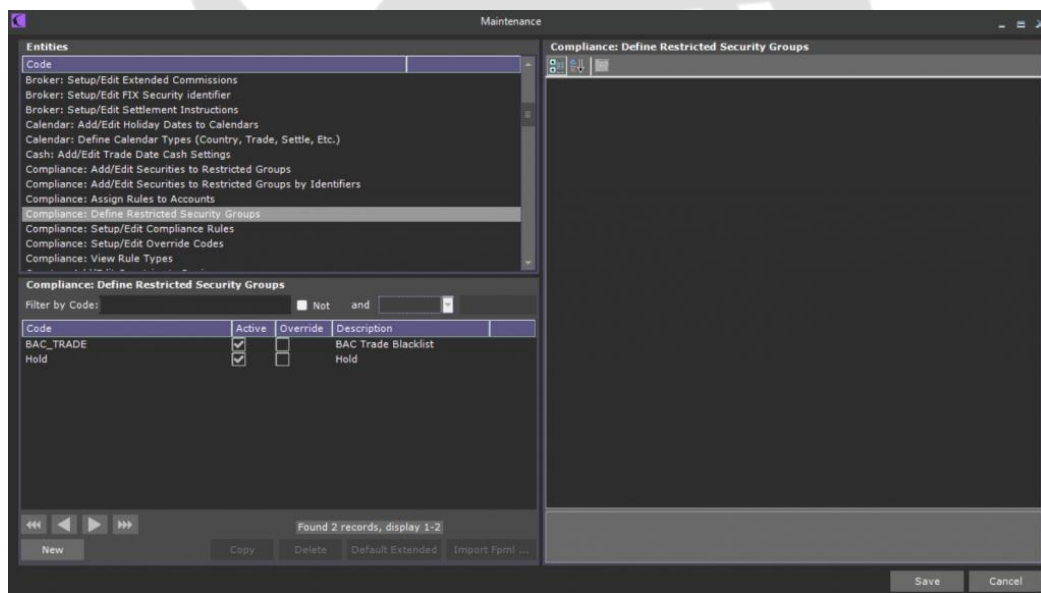


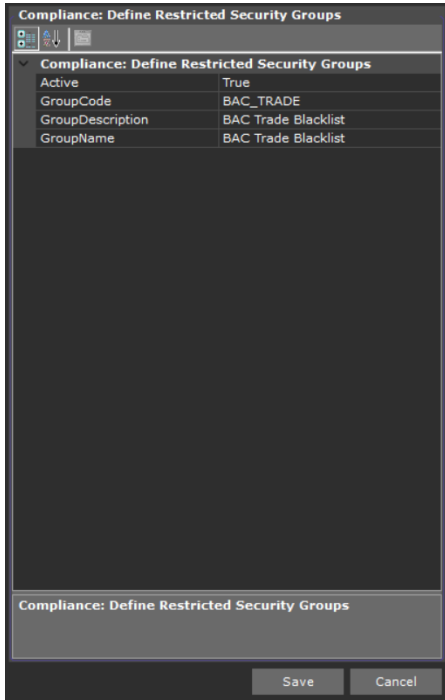
How to configure a restricted group security (Compliance)

In this case , the entities involved are “Restricted Group” and “Restricted Group Security”.

RESTRICTED GROUP

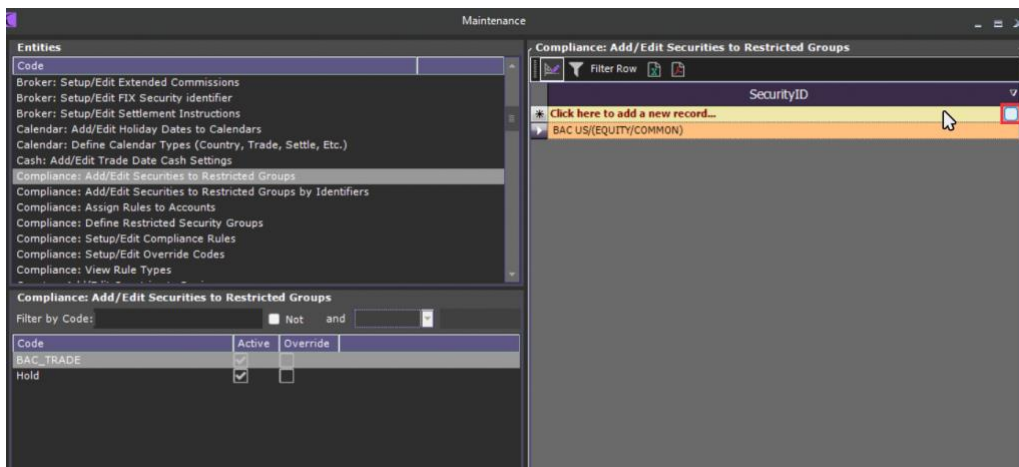


1. To add a new Restricted Group, open Maintenance and click on **Compliance: Define Restricted Security Groups**.
2. Click on “New” button.
3. Set the restricted GroupCode value
4. Set the restricted GroupDescription value
5. Set the restricted GroupName value
6. Save the changes.

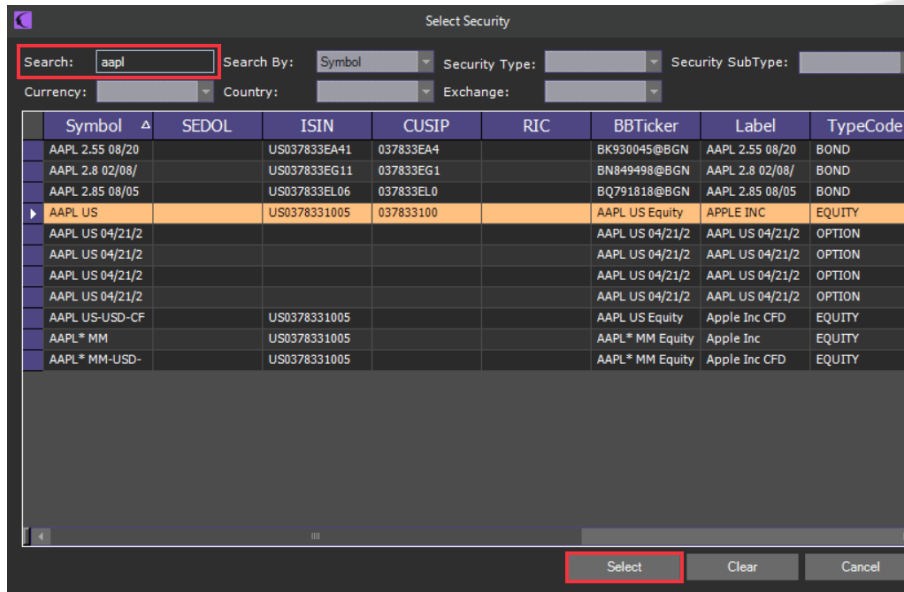


RESTRICTED GROUP SECURITY

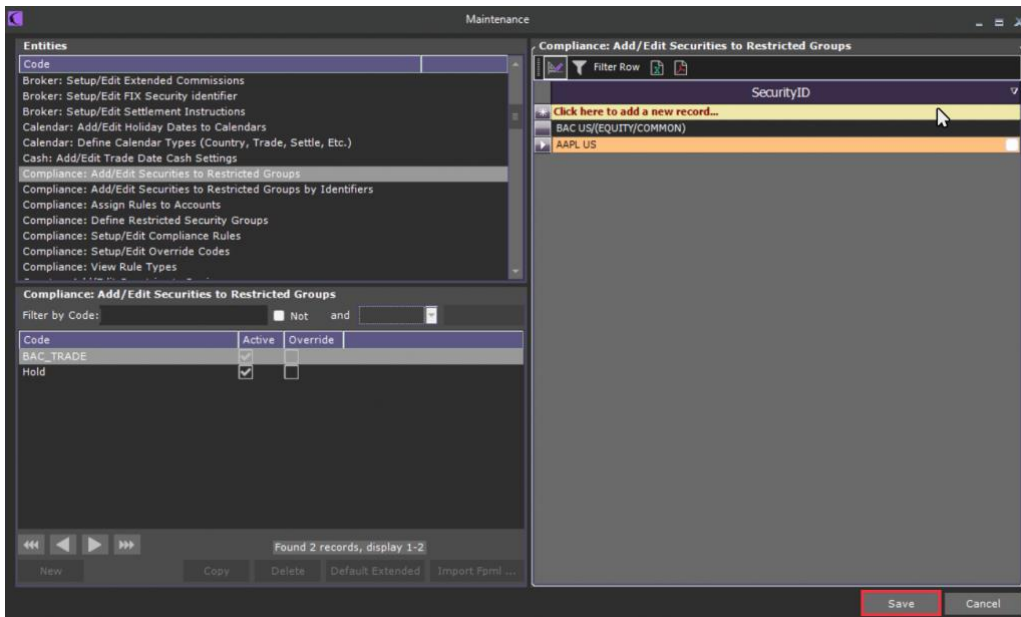
1. To add a security into a "Restricted Group", open Maintenance and click on **Compliance: Add/Edit Securities to Restricted Groups**.
2. Select one group in the bottom-left section. Then, in the section on the right, place your mouse on the "Click here to add a new record..." row and a rounded square will appear. Click on it.



3. The following dialogue will appear. Here, you can search the security you wish and press 'Select'.



4. Once it is added, Save your changes within Maintenance window.





CONTACT US

Email: support@athenasystems.com

Website: www.athenasystems.com

AMERICAS:

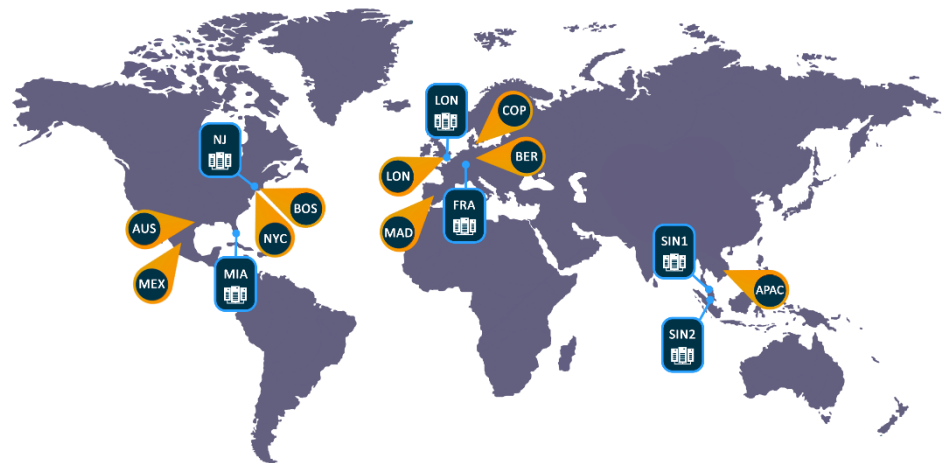
1411 Broadway, 16th Floor
New York, New York 10018, USA

UK, EUROPE & MIDDLE EAST:

Carrera de San Jerónimo, 17
28014 Madrid, SPAIN

APAC:

11 Doan Van Bo, 23rd Floor
Ward 12, District 4, 700000, Ho Chi Minh City, VIETNAM



[Visit the Spark Help Portal](#)