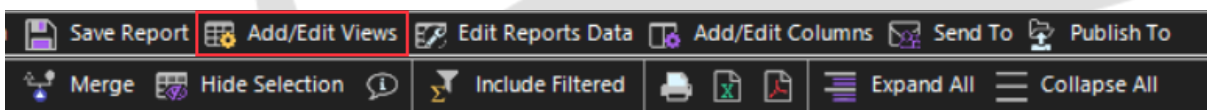
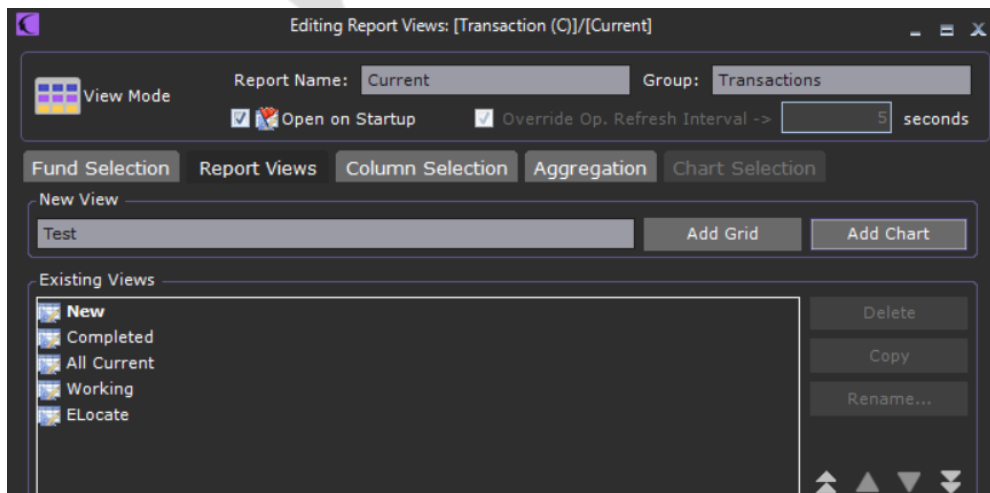


Creating/Adding report chart views

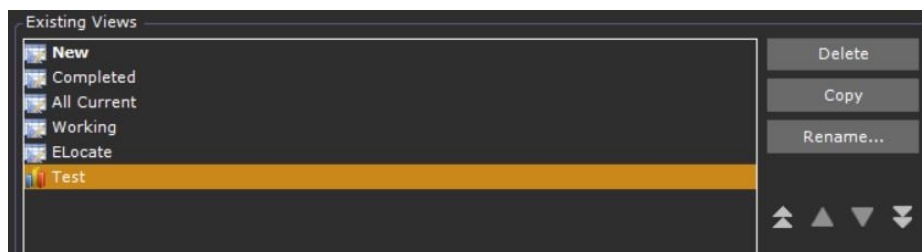
1. Select an existing report or create a new one.
2. Click on 'Report'Add/Edit Views'.



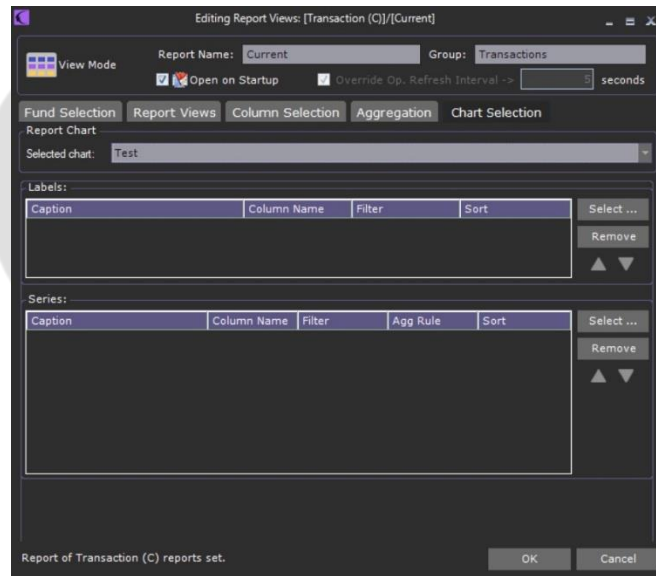
3. In the new window, click on 'Report Views'. Type the name of an existing report in which you would like to create a Chart View.
4. Click 'Add Chart'.



5. The name of the chart you have just added should appear at the bottom of the list, with a small chart next to it.



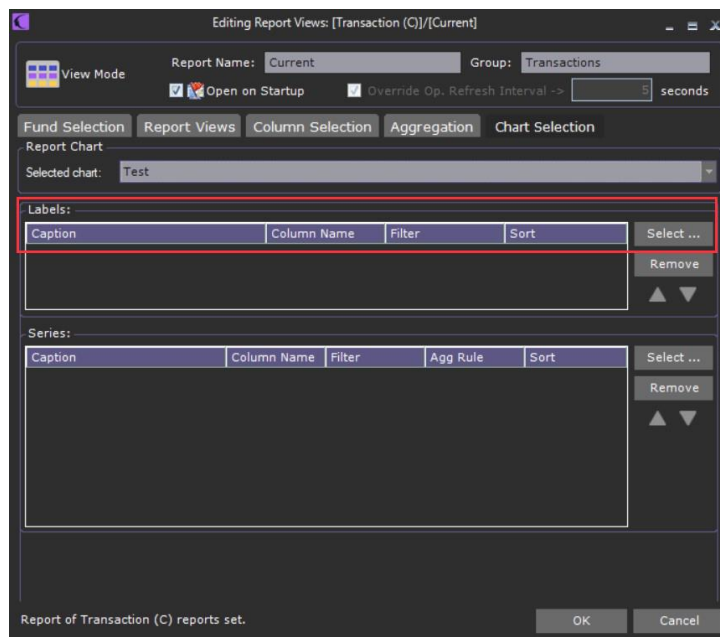
6. Go to Chart Selection.



7. Select the chart you have just created, we have called it ExcelTestChartView.

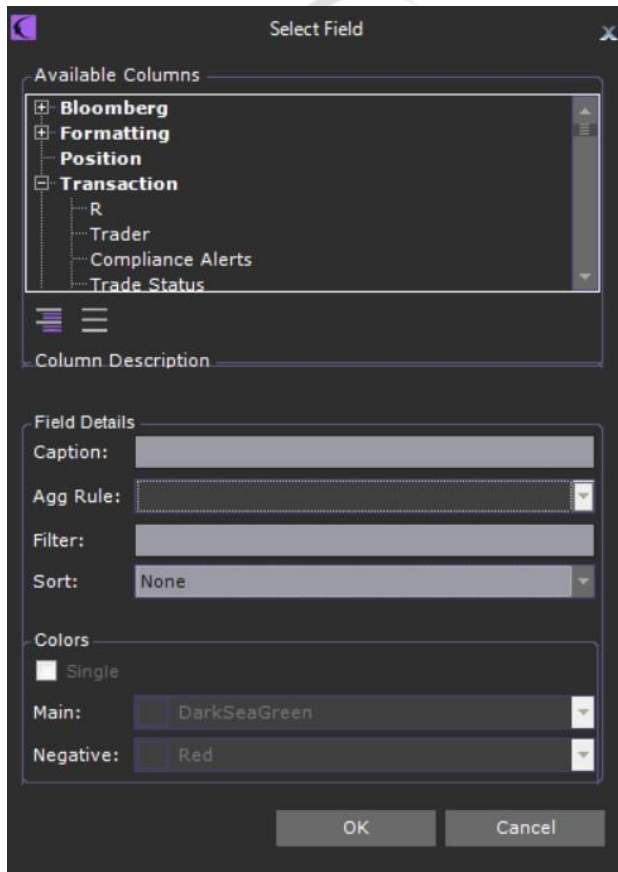
8. Go to Label.

9. Click on Select.



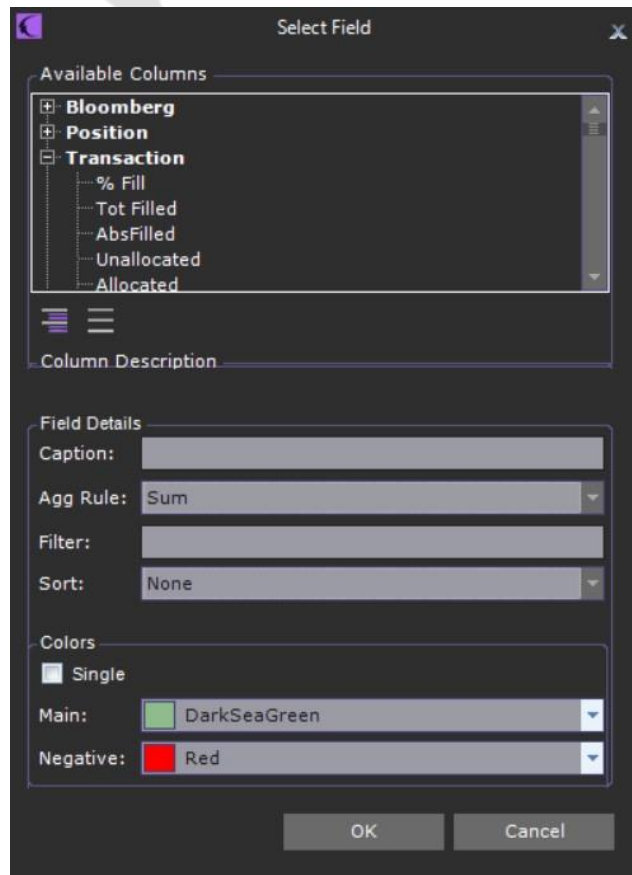
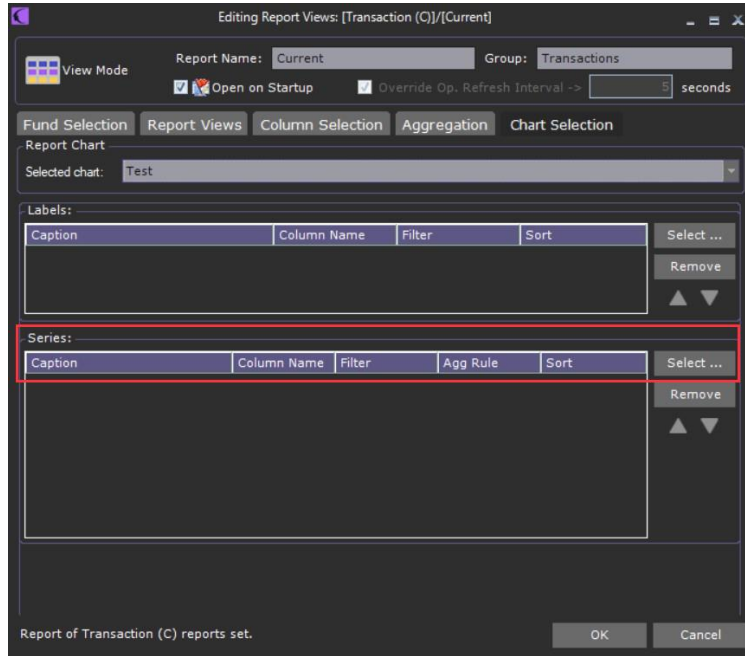
10. Select a column from the available columns.

11. Click ok.



12. The selected column will appear under labels.

13. Repeat steps 9 to 11 but selecting series instead of labels.





CONTACT US

Email: support@athenasystems.com

Website: www.athenasystems.com

AMERICAS:

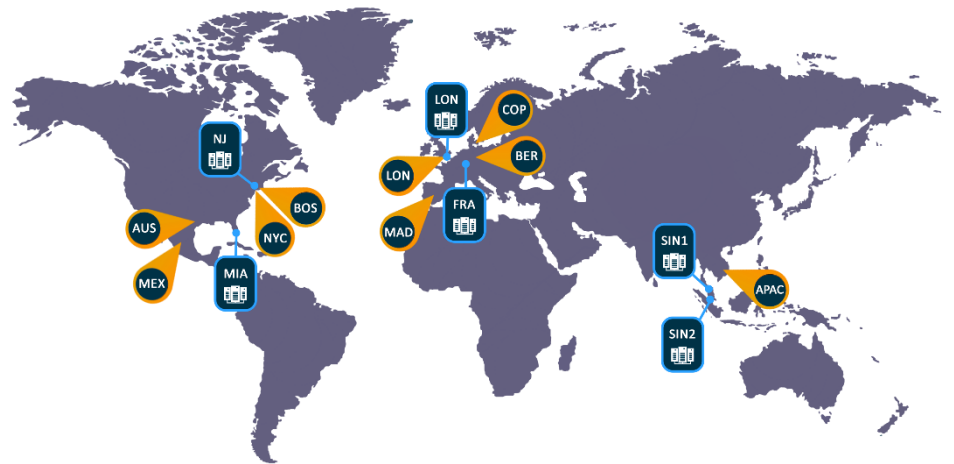
1411 Broadway, 16th Floor
New York, New York 10018, USA

UK, EUROPE & MIDDLE EAST:

Carrera de San Jerónimo, 17
28014 Madrid, SPAIN

APAC:

11 Doan Van Bo, 23rd Floor
Ward 12, District 4, 700000, Ho Chi Minh City, VIETNAM



[Visit the Spark Help Portal](#)