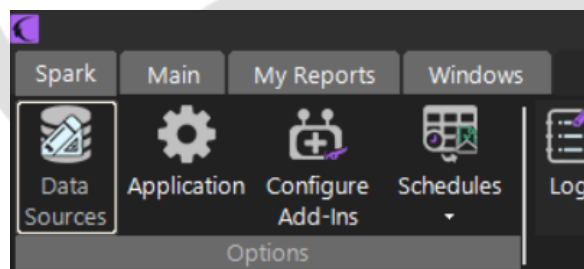


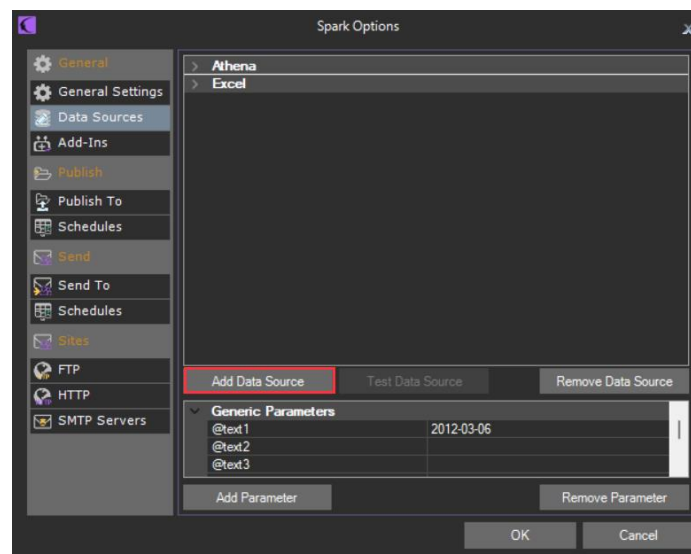
Creating/Adding a static Data Source

Spark can be fed by more than one data source.

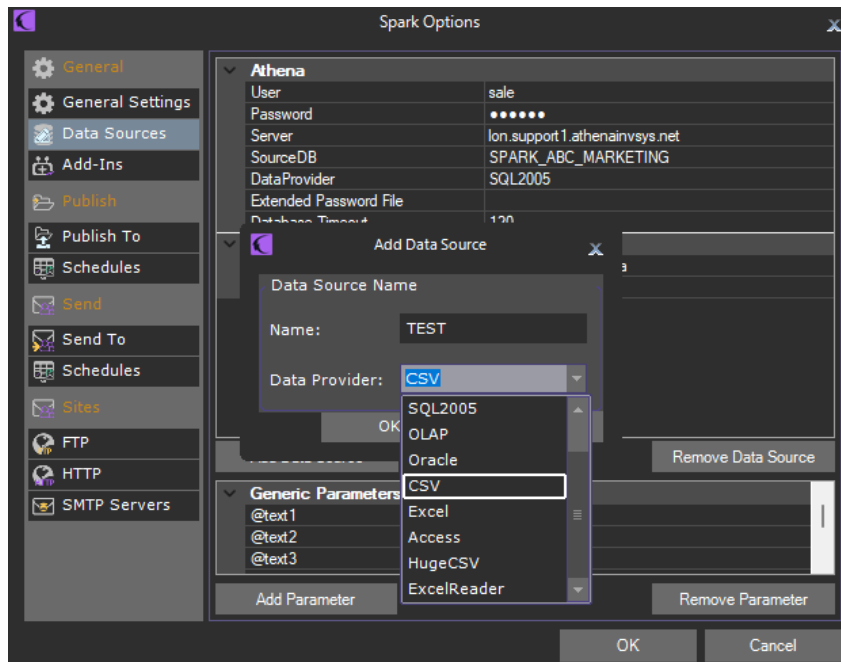
1. Open 'Configuration' tab and click on Data Sources.



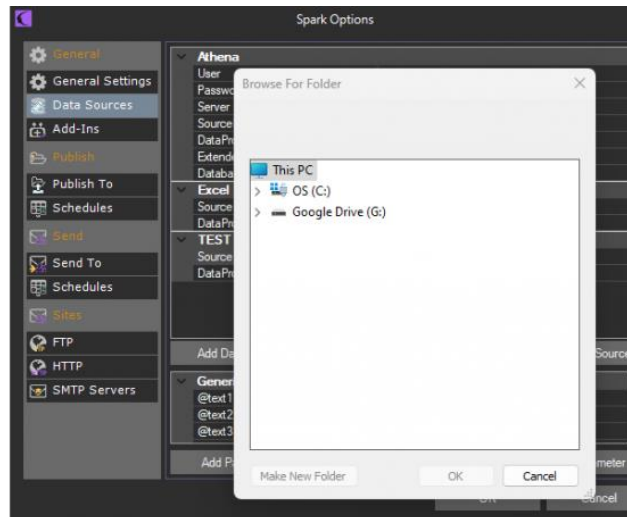
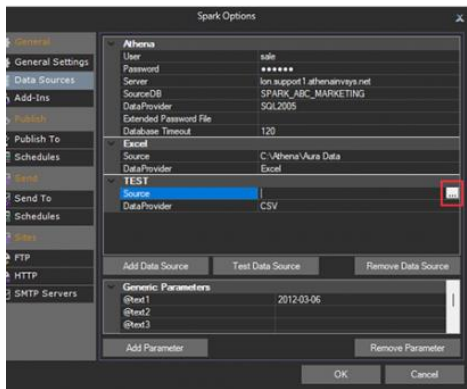
2. Click on 'Add Data Source'.



3. Name the data.
4. Select the data provider from the list and click OK.



5. You will now see your new data source listed in Data Sources. If we click on the grey box next to Source, we will be able to point Spark to the data file we wish.





CONTACT US

Email: support@athenasystems.com

Website: www.athenasystems.com

AMERICAS:

1411 Broadway, 16th Floor
New York, New York 10018, USA

UK, EUROPE & MIDDLE EAST:

Carrera de San Jerónimo, 17
28014 Madrid, SPAIN

APAC:

11 Doan Van Bo, 23rd Floor
Ward 12, District 4, 700000, Ho Chi Minh City, VIETNAM



[Visit the Spark Help Portal](#)