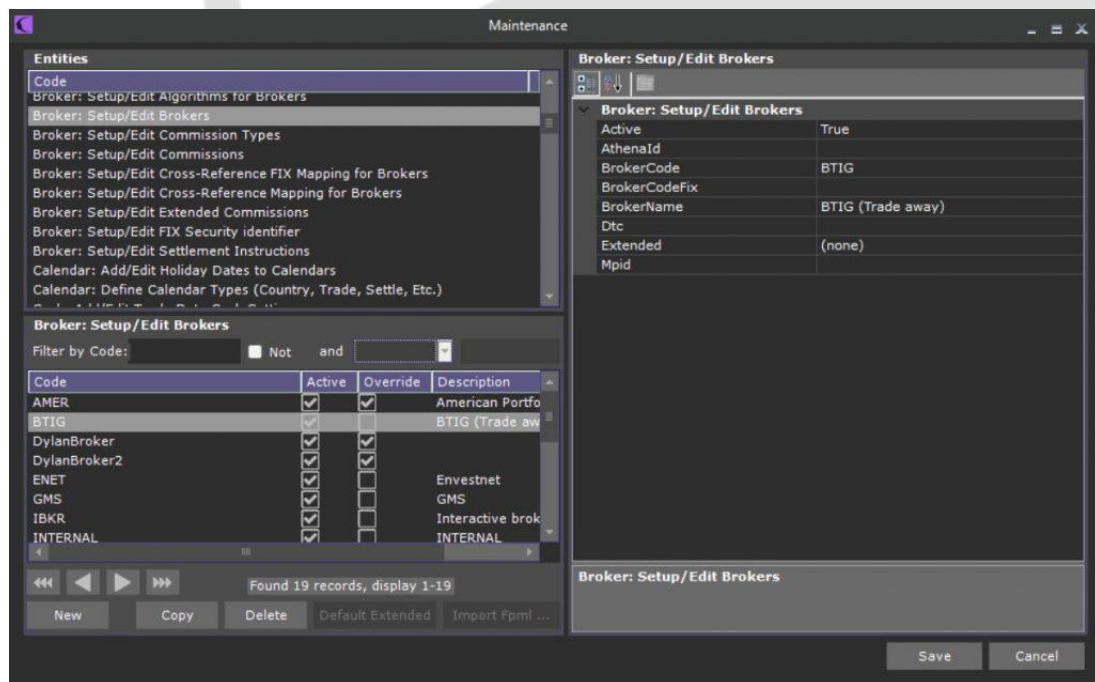


Broker entities: set up a new broker

ADDING-EDITING A BROKER

Open Maintenance and scroll to Broker: Setup/Edit Brokers.



Active has true/false option. When "true" this broker will appear in the combo list in the ticket, on the contrary, it will be in your database but it will not appear as available when trading.

BrokerCode is a mandatory value, and **BrokerName** is advisable but very helpful to correctly identify a broker.

BrokerCodeFIX

Here there is an important setting, set the broker up as **MANUAL** or **FIX** broker.

If you fill **BrokerCodeFIX** it will be electronic (FIX), and this will be the code that will appear when sending messages to FIX; if you desire the broker to be a **MANUAL** one, leave this field empty.



CONTACT US

Email: support@athenasystems.com

Website: www.athenasystems.com

AMERICAS:

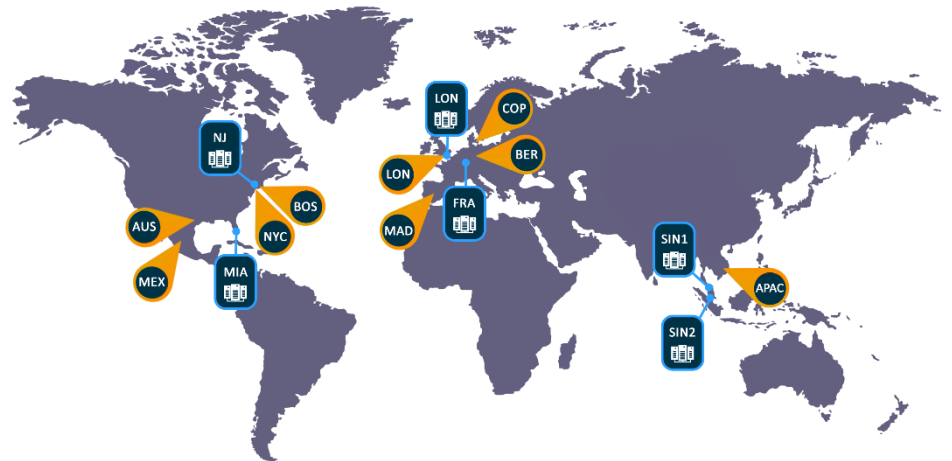
1411 Broadway, 16th Floor
New York, New York 10018, USA

UK, EUROPE & MIDDLE EAST:

Carrera de San Jerónimo, 17
28014 Madrid, SPAIN

APAC:

11 Doan Van Bo, 23rd Floor
Ward 12, District 4, 700000, Ho Chi Minh City, VIETNAM



[Visit the Spark Help Portal](#)