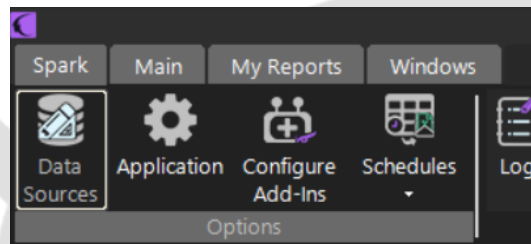
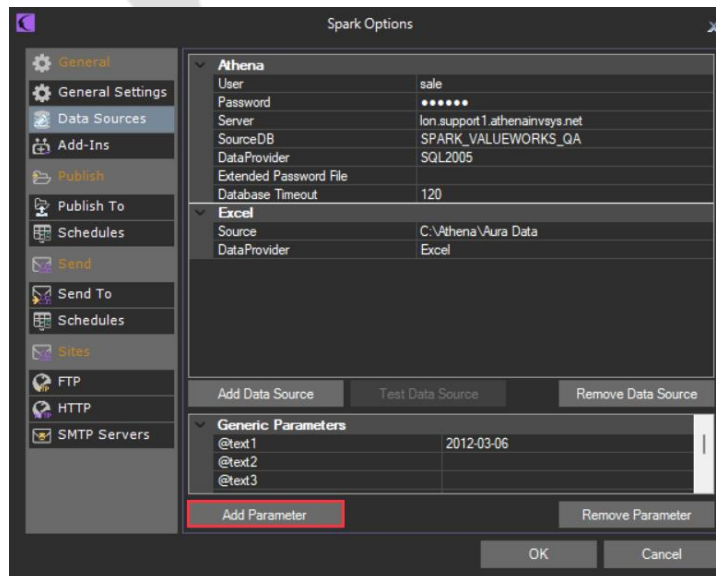


Adding a parameter

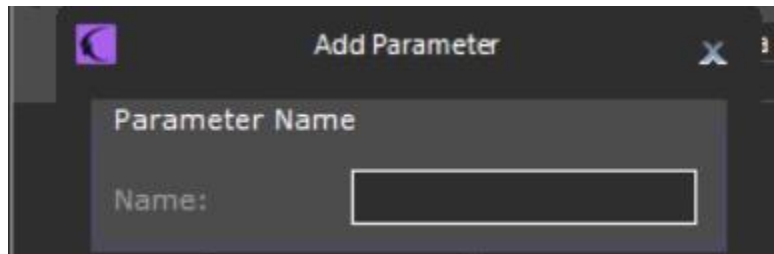
1. Open Configuration tab and click on Data Sources.



2. Click on 'Add Parameter'.



3. Write a name for the parameter and click 'Ok'.





CONTACT US

Email: support@athenasystems.com

Website: www.athenasystems.com

AMERICAS:

1411 Broadway, 16th Floor
New York, New York 10018, USA

UK, EUROPE & MIDDLE EAST:

Carrera de San Jerónimo, 17
28014 Madrid, SPAIN

APAC:

11 Doan Van Bo, 23rd Floor
Ward 12, District 4, 700000, Ho Chi Minh City, VIETNAM



[Visit the Spark Help Portal](#)