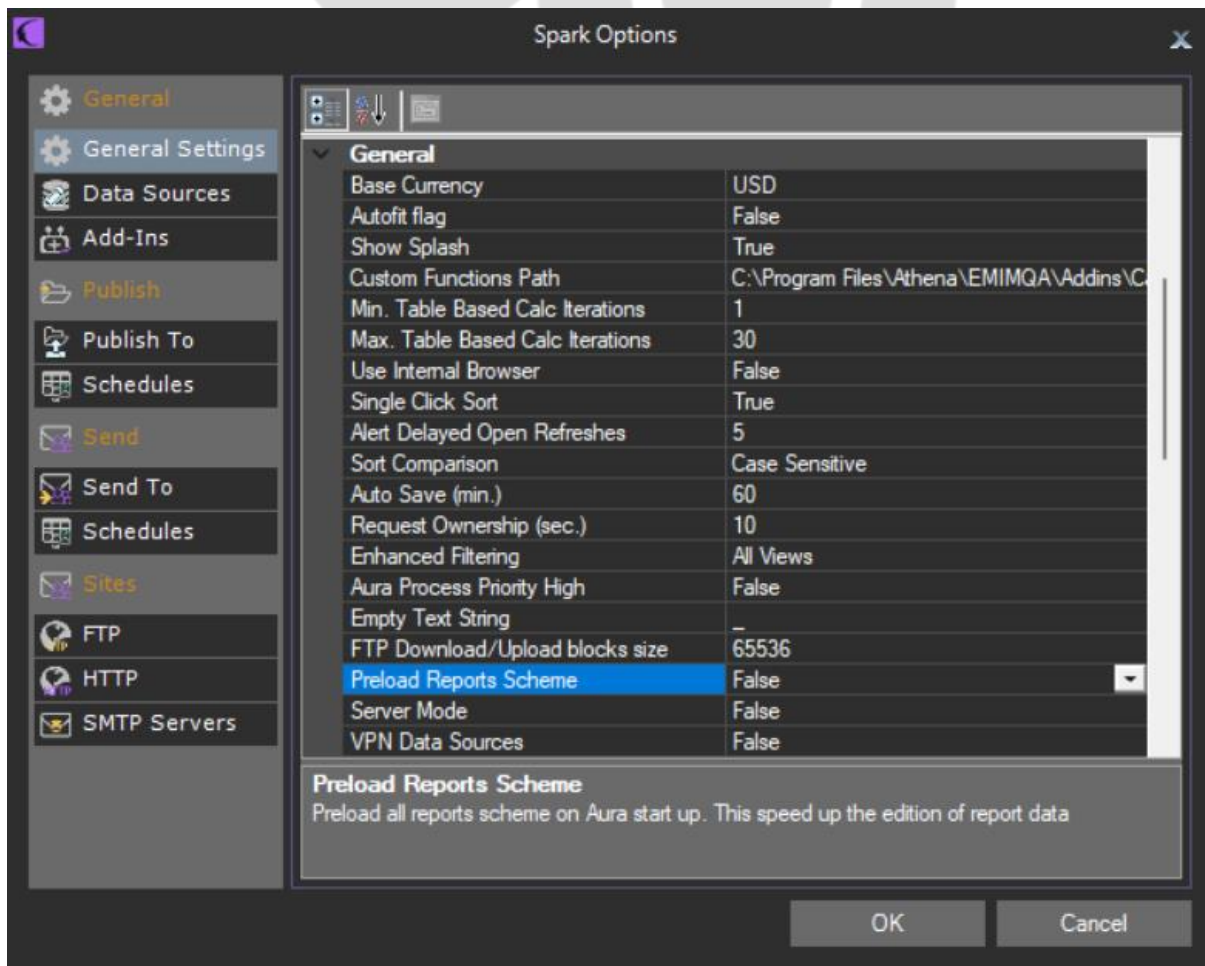


Preload reports scheme

The preload Reports Scheme setting must be false by default. If true, Spark preloads all reports schemes to speed up the report edit data workflows. In any case, after the first report edit data is open, the last scheme is kept in the cache so second time the load of the dialog is much faster than the first time.





CONTACT US

Email: support@athenasystems.com

Website: www.athenasystems.com

AMERICAS:

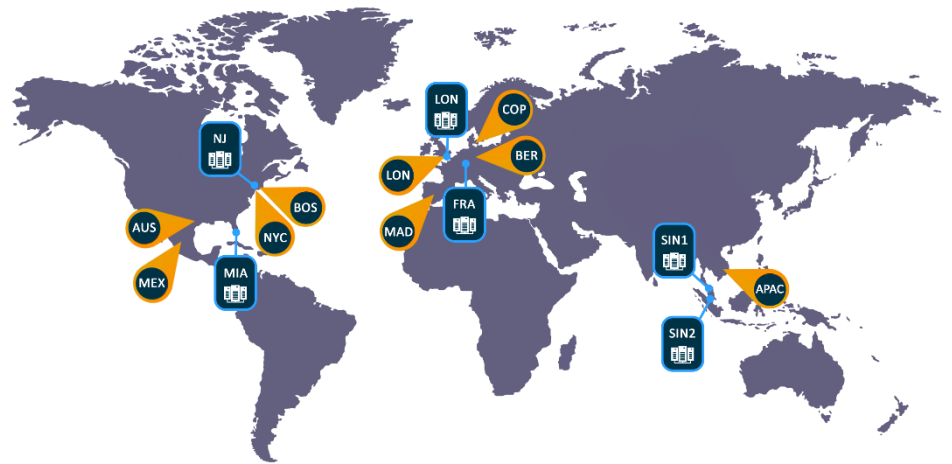
1411 Broadway, 16th Floor
New York, New York 10018, USA

UK, EUROPE & MIDDLE EAST:

Carrera de San Jerónimo, 17
28014 Madrid, SPAIN

APAC:

11 Doan Van Bo, 23rd Floor
Ward 12, District 4, 700000, Ho Chi Minh City, VIETNAM



[Visit the Spark Help Portal](#)