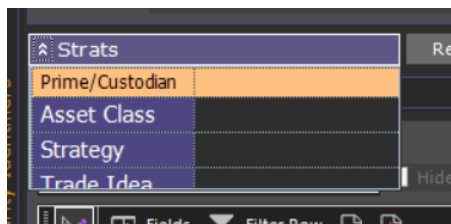
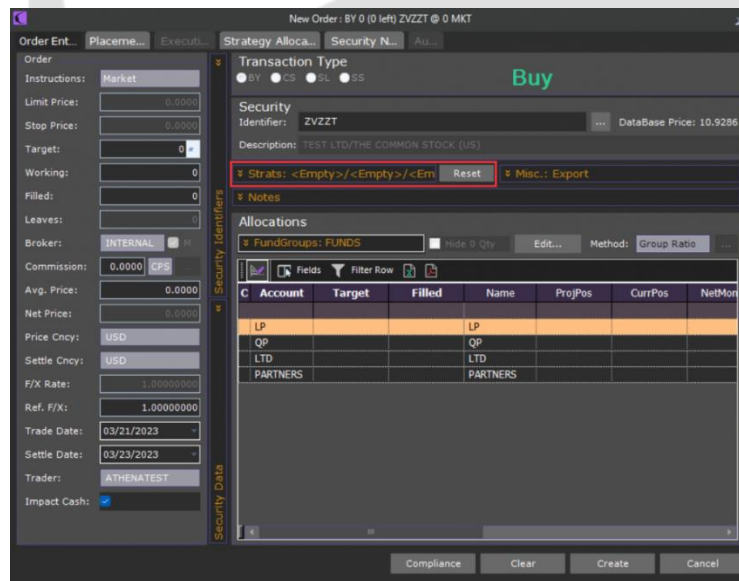
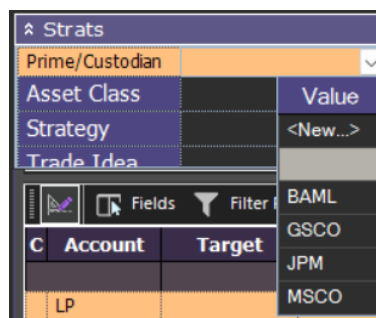


Strategies in detail

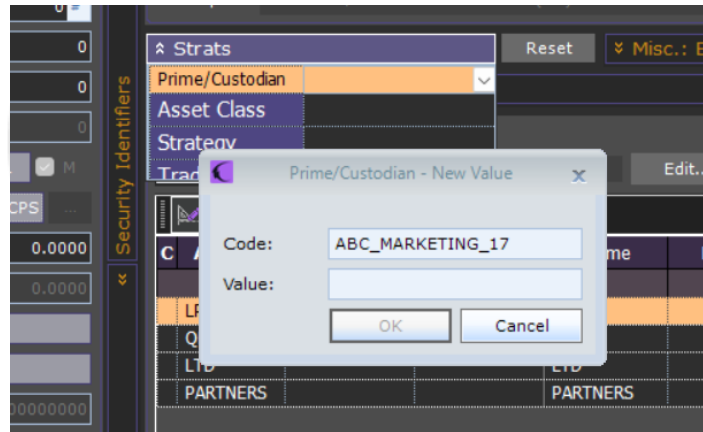
1. Strategies: you can track five different levels of strategies. These are all user definable. They can be hierarchical or completely independent.



2. You can set them from a pick list, or for things like a trade pair.



3. You can create them dynamically. Click **New** within the dropdown menu and enter a code and value.



5. This can be used in any pick list in the future.

6. New PB, Strategy and PM can be added.



CONTACT US

Email: support@athenasystems.com

Website: www.athenasystems.com

AMERICAS:

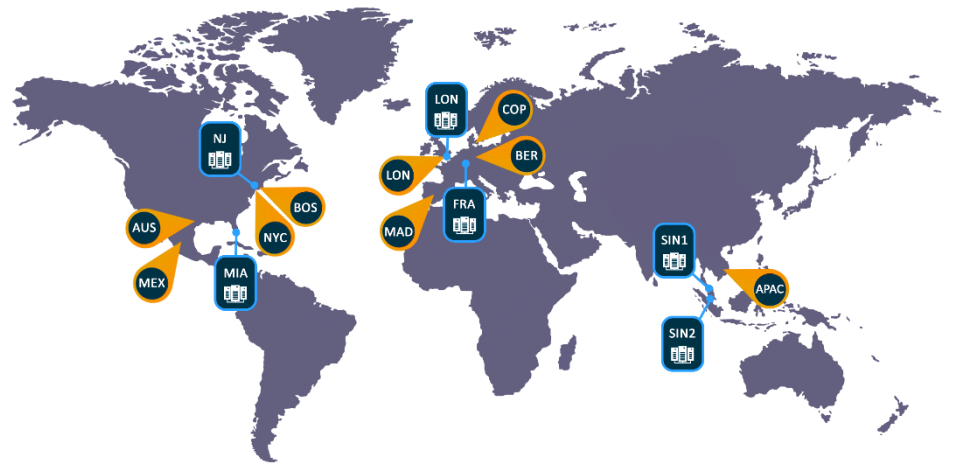
1411 Broadway, 16th Floor
New York, New York 10018, USA

UK, EUROPE & MIDDLE EAST:

Carrera de San Jerónimo, 17
28014 Madrid, SPAIN

APAC:

11 Doan Van Bo, 23rd Floor
Ward 12, District 4, 700000, Ho Chi Minh City, VIETNAM



[Visit the Spark Help Portal](#)