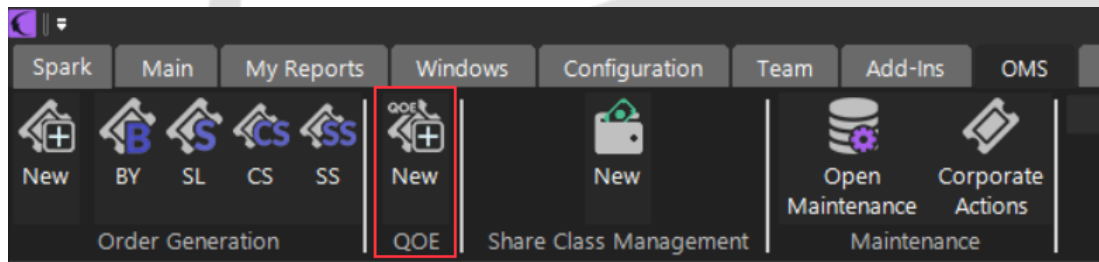


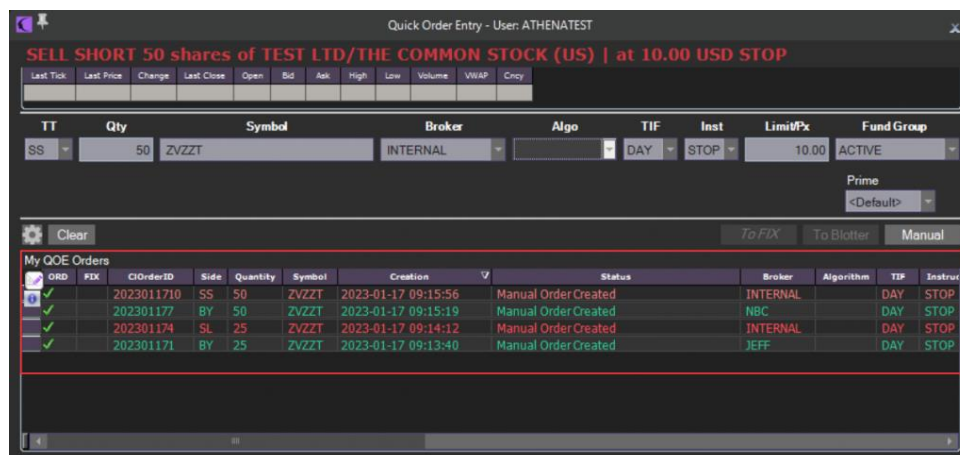
## Make a Transaction QOE – Quick Order Entry

Click on “OMS” tab and select New QUICK ORDER ENTRY:



TT - Select the transaction type you want to make.

- BY. Open a long position. Trade colour = Light Blue
- SL. Close a long position. Trade colour = Red
- SS. Open a short position. Trade colour = Dark Red
- CS. Close a short position. Trade colour = Dark Blue



Qty - Enter the shares quantity. It is the total shares to get.

Symbol - Set the Symbol: Security.

Broker - Set the broker.

**Algo** - Select the Algo, if the broker allows it.

**TIF** - Select the TIF (Time in force): DAY, GTC.

**Inst** - Select the Inst (Instructions):

- **MKT** - Market
- **LMT** - Limit
- **STOP** - Stop
- **MOO** - Market on Open
- **LOO** - Limit on Open
- **MOC** - Market on Close
- **LOC** - Limit on Close

**Limit/Px** - SetLimit/Px available in:

- **LMT** - Limit
- **STOP** - Stop
- **LOO** - Limit on Open
- **LOC** - Limit on Close

**FundGroup**- Select the Fund Groups.

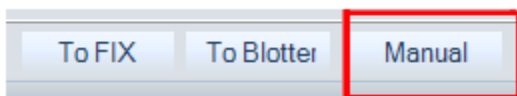
**Prime Broker**- Select Prime Broker.

**Strategy**- Select Strategy.

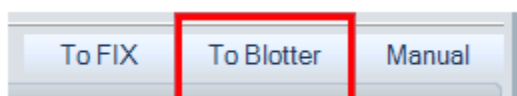
**Hot Issue**- Select Hot Issue.

**Basket**- Select Basket.

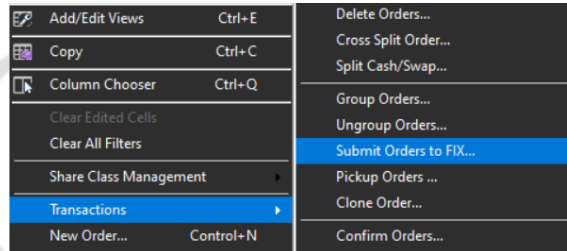
**MANUAL TRADE**- Click on MANUAL. MY QOE ORDERS - Status message: Manual Order



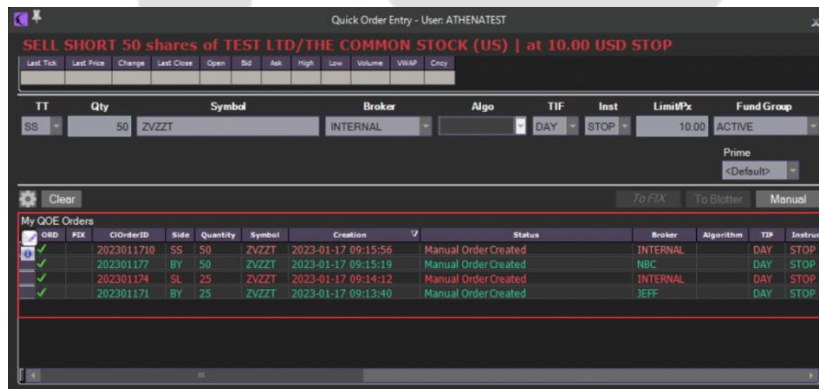
**ELECTRONICALLY TRADE**- Click on TO BLOTTER. MY QOE ORDERS - Status message: Order Created, waiting to be manually sent to FIX.



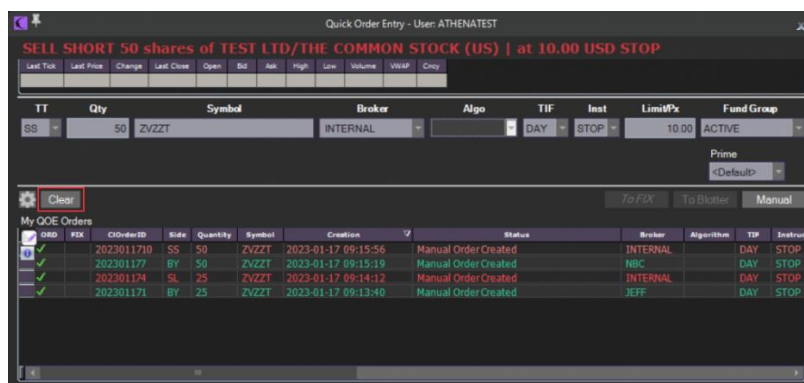
To be sent to fix use SUBMIT ORDER TO FIX in transaction current report.



ELECTRONICALLY TRADE- Click on TO FIX. MY QOE ORDERS - Status message: Success - Order created and submitted to FIX. Trade is shown in My QOE Orders.



Clear values - Click on CLEAR BUTTON.



Modify or delete the trade: open transaction current report.



## CONTACT US

Email: [support@athenasystems.com](mailto:support@athenasystems.com)

Website: [www.athenasystems.com](http://www.athenasystems.com)

### AMERICAS:

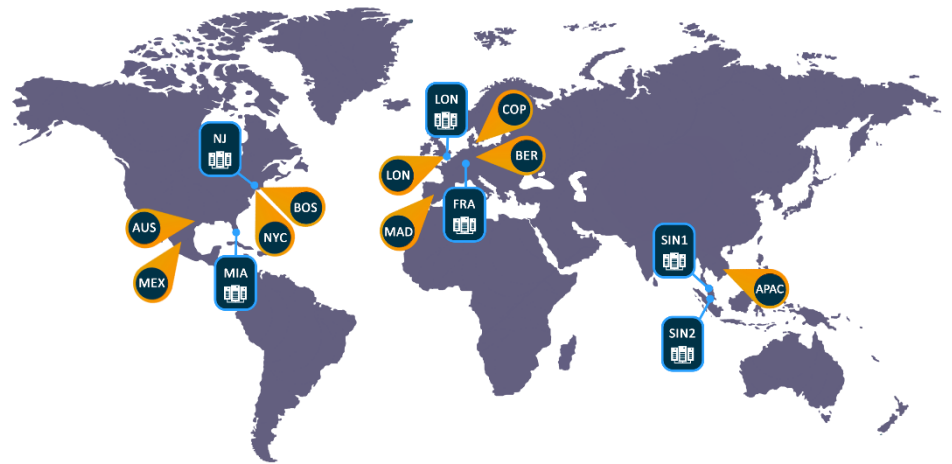
1411 Broadway, 16th Floor  
New York, New York 10018, USA

### UK, EUROPE & MIDDLE EAST:

Carrera de San Jerónimo, 17  
28014 Madrid, SPAIN

### APAC:

11 Doan Van Bo, 23<sup>rd</sup> Floor  
Ward 12, District 4, 700000, Ho Chi Minh City, VIETNAM



[Visit the Spark Help Portal](#)